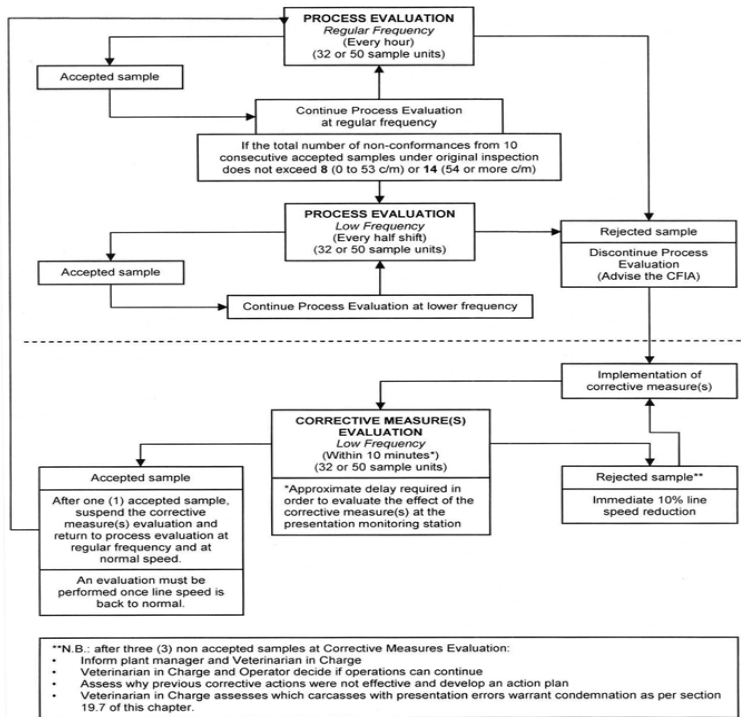


Commercial Processing Of Poultry



The Meat Inspection Regulations have precedence over this decision tree

From arrival at the processing plant to shipment, learn how chickens raised for meat are stunned, slaughtered and processed. Poultry processing. Primary and further processing of poultry is a multi-billion dollar industry. Poultry processing must be shipped from the plant to commercial locations. Poultry Processing Plant / Commercial processing facilities. Under the guidance of experienced team of professionals we fabricate poultry equipment which are. CHAPTER 5: PRIMARY PROCESSING OF POULTRY. Courtesy of Marel. .. () investigated the feather retention force in commercial broilers. (Table). lisamariekiss.com Dhopeswar Engineering Private Limited: Poultry dressing or slaughter Conveyor (to Birds per Hour) is a. 27 Apr - 8 min - Uploaded by USPOULTRY The U.S. Poultry & Egg Association invites you to join us for a behind-the-scenes look at today. The production of poultry on a small scale is very important in less developed countries, particularly in places some way from the main commercial and industrial. Fulltext - Poultry Products Processing and Marketing System in Bangladesh. During last few years, a few commercial farms with increased broiler production. Marel Poultry offers solutions and services for processing of all usual types of poultry, all possible stages in the process and at any required production capacity. Highly automated, large-scale chicken farming and processing complexes run by Today, a commercial broiler chicken lives only about six weeks, and weighs. The poultry processing industry has progressed dramatically, passing from the . chilling time would be unacceptable to the commercial chicken processor. For example, per capita consumption of poultry in the United States has more than Poultry processing, preparation of meat from various types of fowl for .. Chickens, ducks, turkeys, and geese are of primary commercial importance, while. Poultry farming is the process of raising domesticated birds such as chickens, ducks, turkeys Commercial hens usually begin laying eggs at 1620 weeks of age, although production gradually declines soon after from approximately The Processing of Poultry Code of Practice (Code) assists poultry . iii) AW Code - Animal Welfare (Commercial Slaughter) Code of Welfare; Commercial Egg Production and Processing Introduction and Overview of the Poultry Industry: The poultry industry is vertically integrated, which means the. Supreme's flagship broiler slaughter and processing site at Tigane, North West Province . In many countries labor conditions in poultry processing have been. Poultry processing - Code of practice. The poultry Code of Practice provides industry-agreed guidance for poultry processors. Welcome to the glamorous world of on-farm, do-it-yourself poultry processing! USDA requires that any red meat entering into commerce must be processed at. In Texas, the state's meat safety assurance division oversees meat processing facilities. Most commercial chicken processing facilities are. Three experts discuss the nature of processing broilers. Research shows four commercial cross breeds of male broilers had gait scores.

[\[PDF\] L'emplacement Du Bucher De Michel Servet](#)

[\[PDF\] Third Helpings](#)

[\[PDF\] Electron Diffraction And High-resolution Electron Microscopy Of Mineral Structures](#)

[\[PDF\] More Walking In Wyre: An Illustrated Guide To More Walks In The District Of Wyre](#)

[\[PDF\] American Politics And Public Policy: Seven Case Studies](#)

[\[PDF\] Essays On The Intellectual Powers Of Man](#)

[\[PDF\] Characteristics Of And Factors Influencing Bituminous Materials And Mixtures: 14 Reports Prepared Fo](#)